



ALFA

UNLOCKING THE BIOGAS POTENTIAL
OF LIVESTOCK FARMING

“Scaling up the market uptake of Renewable Energy Systems by
unlocking the biogas potential of Agriculture and Livestock
Farming”

GA 101075659

Challenges and needs for the uptake of biogas in livestock farming in Europe

White Research, EBA, Sustainable Innovations
23rd of May, 2024



PARTNERS



Structure

BLOCK	TIME
Welcome and introduction – Daniel Matilla (SIE)	5'
Research activities in the ALFA project – Pol Camps (White Research)	7'
Biogases in Europe – George Osei Owusu (EBA)	10-12'
Q&A	5'
Results from ALFA's surveys – Pol Camps & Evangelia Tiaka (White Research)	20-22'
Q&A & Wrap up	8-10'

Research activities in the ALFA project

The problem in context

Despite the availability of commercially-mature technologies in Europe and the promising potential of using animal manure for biogas and biomethane production, this potential remains untapped.

Why?

- Low social acceptance and awareness
- Insufficient technical knowledge and skills
- Financial and regulatory barriers

The project's aim

ALFA seeks to support the market uptake of biogas production technologies that use manure as biomass, helping increase the share of renewable energy in the EU and helping reduce emissions from untreated manure.

ALFA will support livestock farmers and other stakeholders in six EU countries

How?



Establish regional hubs across six EU-countries (BE, DK, ES, GR, IT, SK) to analyse local framework conditions and engage local stakeholders in co-designing the approach.



Develop an engagement platform hosting a suite of tools that facilitate collaboration and knowledge exchange.



Deliver a portfolio of business and technical services to support the uptake of biogas systems in livestock farming.

Our Consortium

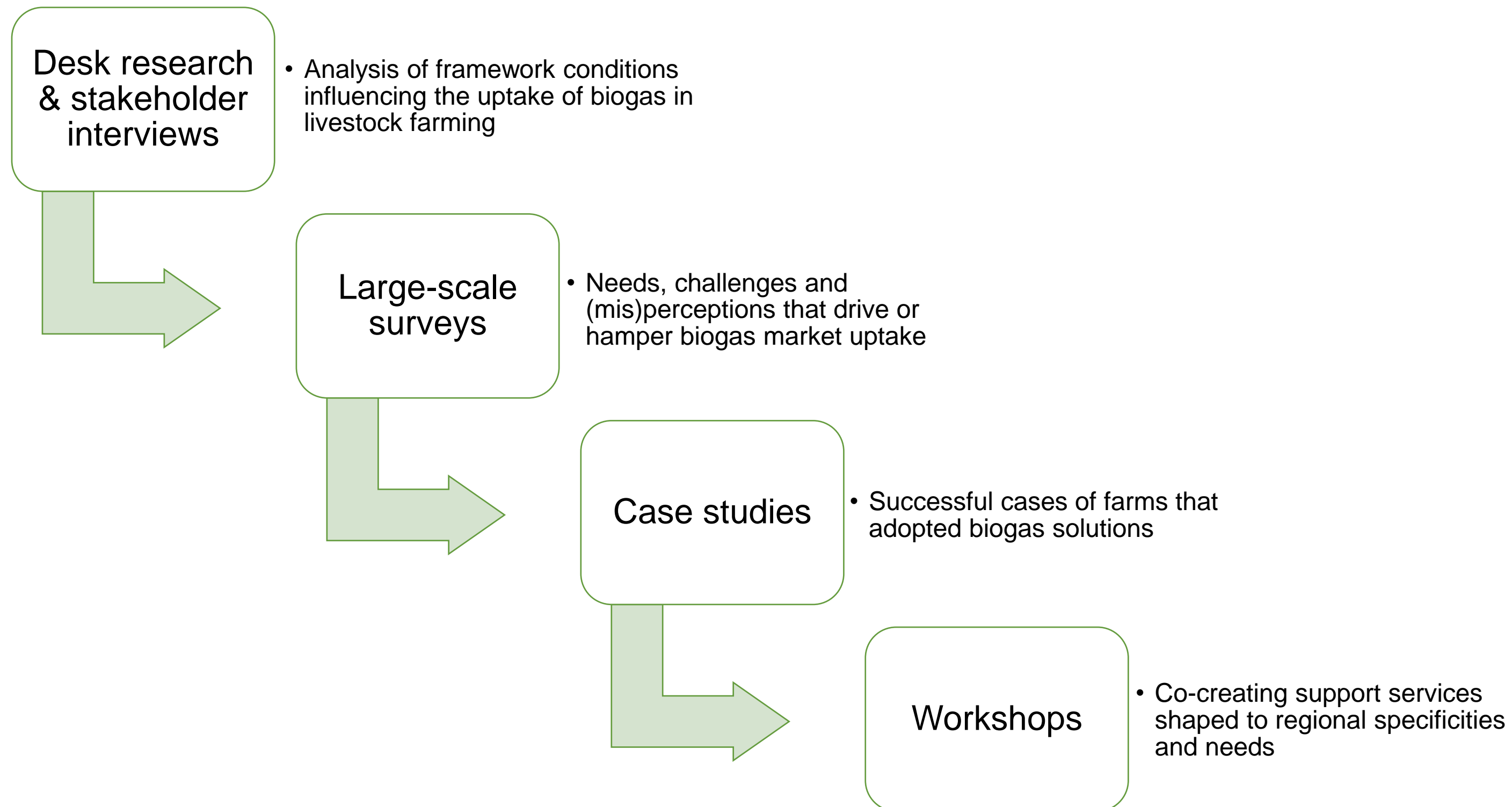
6 regional Hubs

- Greece (Q-PLAN) 
- Italy (APRE) 
- Belgium (White Research) 
- Slovakia (PEDAL) 
- Denmark (FBCD) 
- Spain (Sustainable Innovations) 

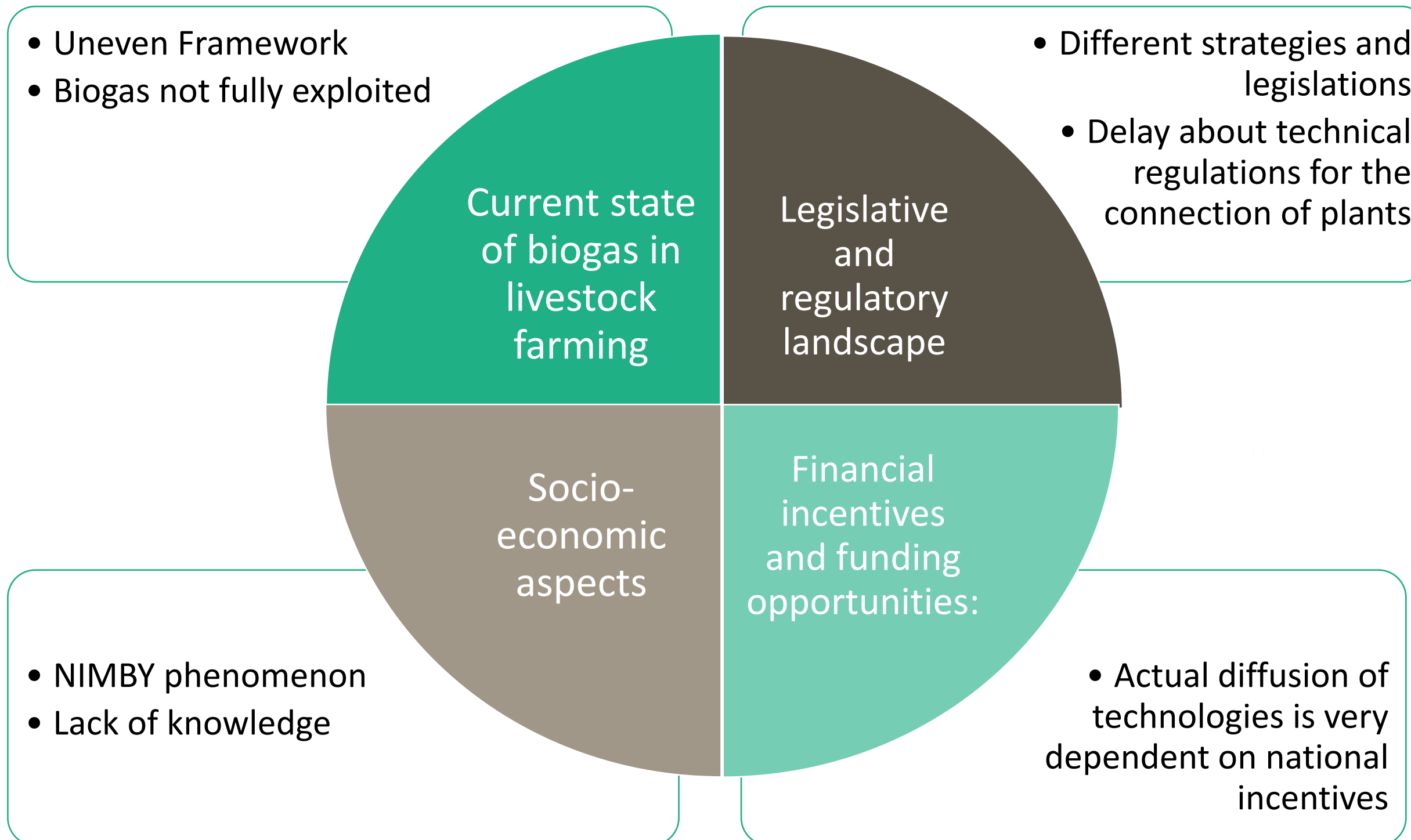
10 partners in total



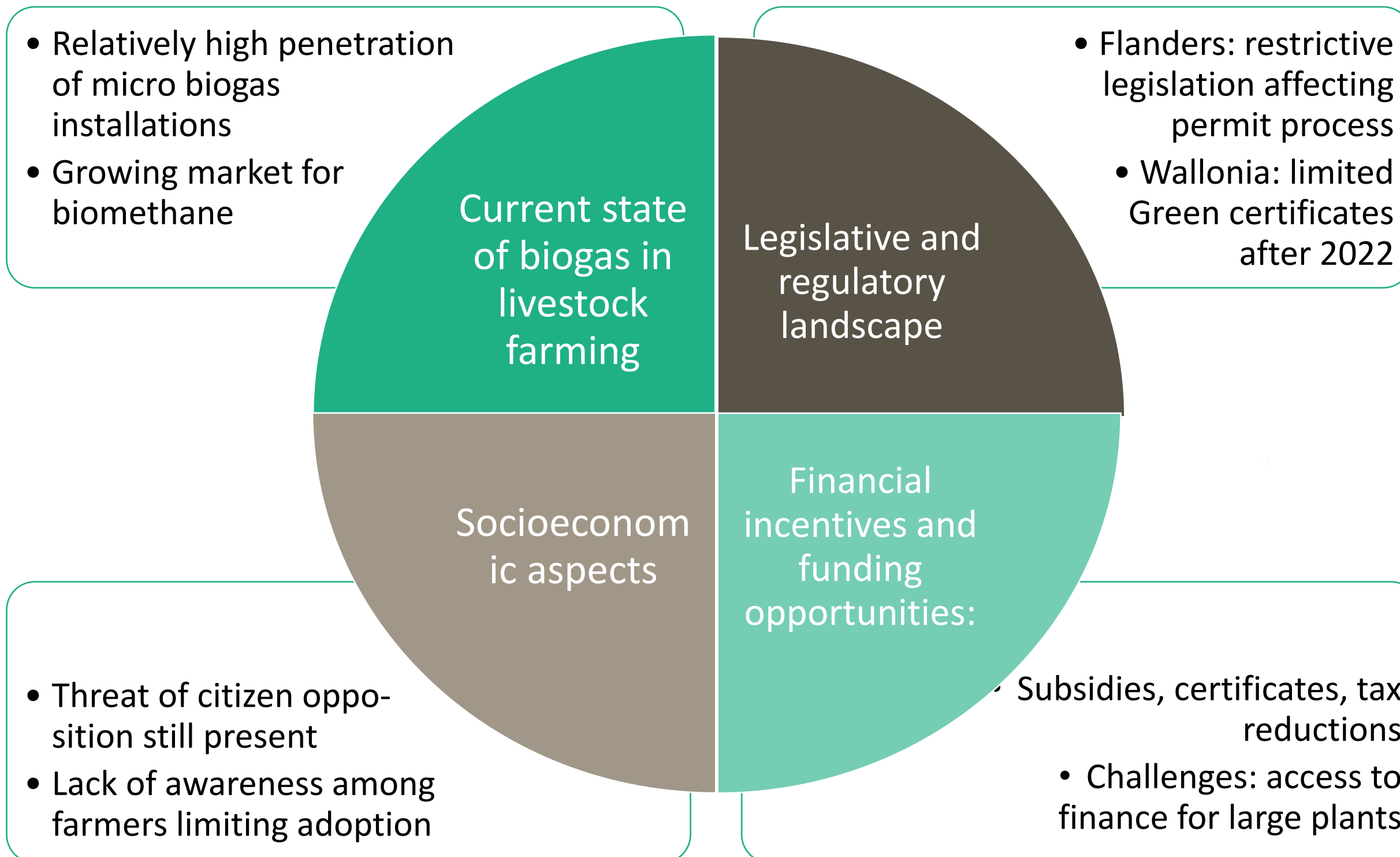
Research activities in ALFA



Framework conditions



Framework conditions



Successful cases – Examples



Name of farm: Trionfi Honorati
Location of the farm: Ancona
Feedstock used: Cow manure
Investment cost: € 1.1 million



Name of the farm: Ferme de la Roche Madou
Location of the farm: Vierves-sur-Viroin, Wallonia
Feedstock used: Cow manure and crops
Investment cost: € 1.5 million
Main implementation advice: Maximising use of their own manure and without extra processing



Name of the plant: Purines Almazán
Location of the plant: Almazán
Feedstock used: Pig and poultry manure
Investment cost: €6M million



ALFA's surveys

Citizen survey

Experts and other stakeholders survey

Purpose

Identify common (mis)perceptions about biogas production from manure among EU citizens;
Examine how sociodemographic and psychological factors influence personal attitudes and ultimately public acceptance

Better understanding of stakeholders' awareness, preferences, intentions, acceptance levels, needs and challenges around livestock farming biogas uptake

Methodology

Structured questionnaire based on relevant literature;
Spread through crowdsourcing platform

Structured questionnaire shared by ALFA partners in each hub and across their networks

Sample

~3000 responses

269 experts in the biogas and farming value chains, comprising farmers, technical advisors, researchers, etc.

Outcome

The understanding of stakeholders' perceptions and needs revealed the main factors acting as key barriers to the market uptake of biogas solutions in livestock farming in the EU, as well as the support needs that need to be addressed to overcome them.

Based on these needs and challenges, we fine-tuned ALFA's services and activities.